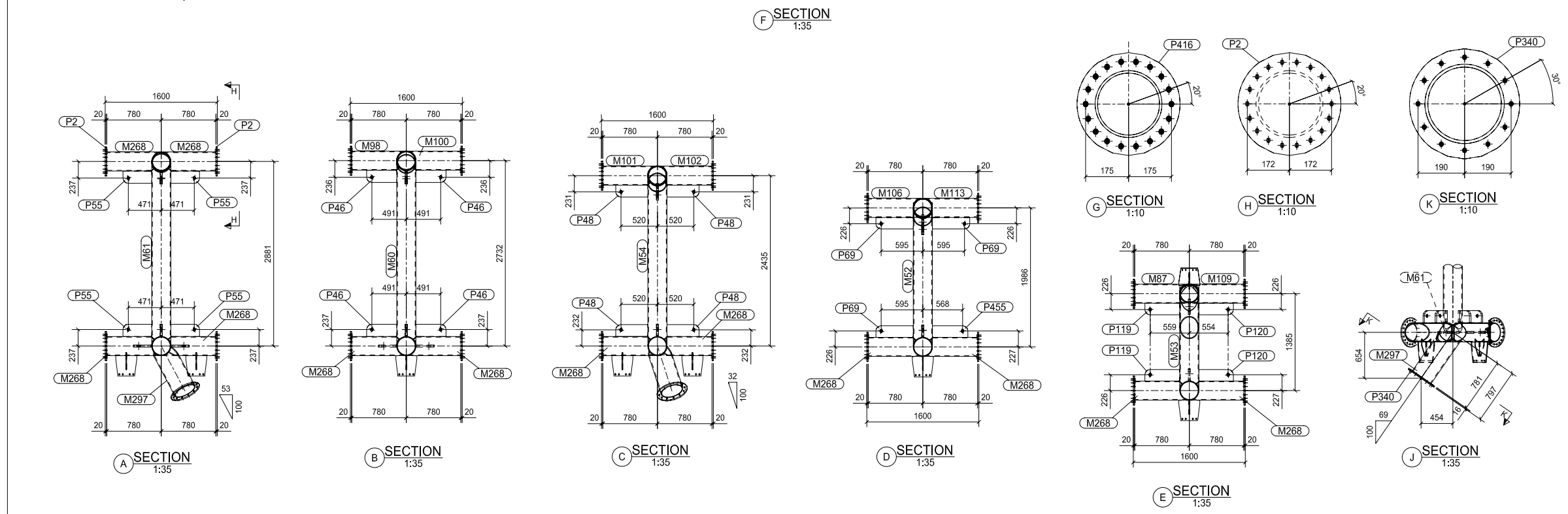
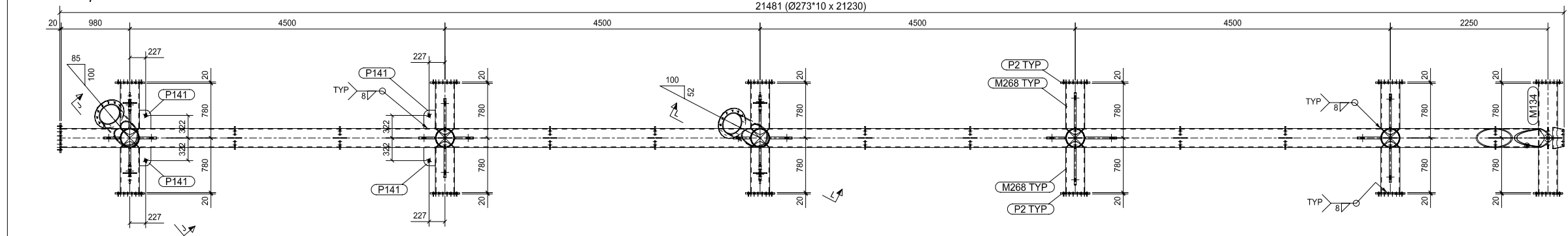
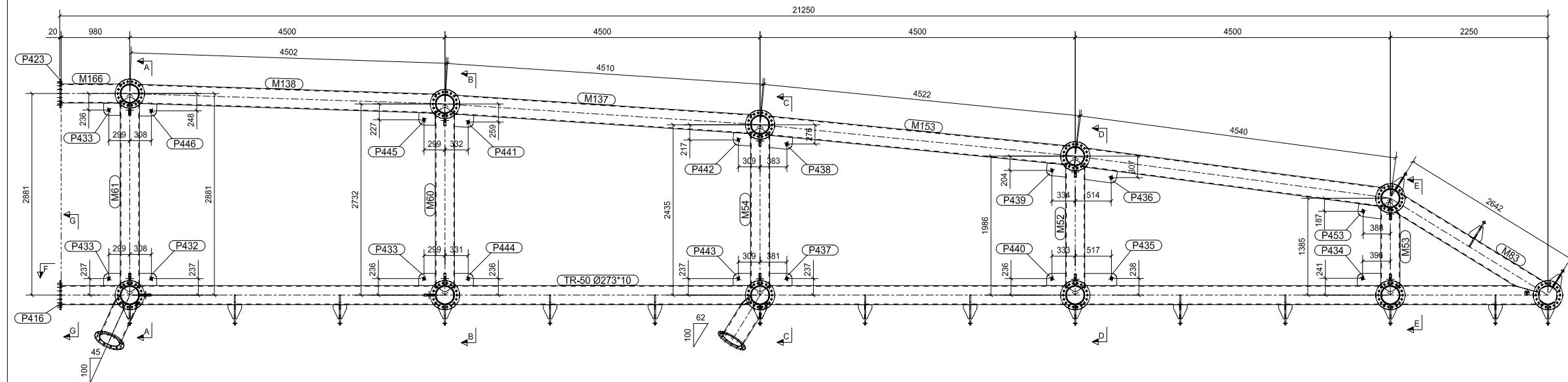


LOCATION LIST	
MARK NO.	GRID LOCATION
TR-50	B/7-1



1 NO'S TRUSS Marked TR-50

GENERAL NOTES: ALL HOLES ARE 22.0 mm UNLESS NOTED. ALL WELDS ARE 6 mm F.W UNLESS NOTED.


MATERIAL LIST FOR ONE ASSEMBLY MK'D		TR-50			1 No. Required	
Mark	Size	Grade	No.	Length	Area	Weight
TR-50	Ø273*10	A53	1	21230	18.0	1365.45
P455	PLT30*165	A36	1	507	0.2	19.69
P453	PLT30*175	A36	1	339	0.1	13.98
P452	PLT10*89.7	A36	29	200	0.0	40.83
P446	PLT30*180.6	A36	1	250	0.1	10.61
P445	PLT30*175	A36	1	240	0.1	9.89
P444	PLT30*175	A36	1	270	0.1	11.12
P443	PLT30*175	A36	1	248	0.1	10.21
P442	PLT30*174.9	A36	1	253	0.1	10.43
P441	PLT30*175	A36	1	276	0.1	11.38
P440	PLT30*175	A36	1	272	0.1	11.20
P439	PLT30*175	A36	1	281	0.1	11.59
P438	PLT30*175	A36	1	331	0.1	13.63
P437	PLT30*175	A36	1	320	0.1	13.18
P436	PLT30*175	A36	1	467	0.2	19.26
P435	PLT30*173.5	A36	1	456	0.2	18.64
P434	PLT30*175	A36	1	336	0.1	13.85
P433	PLT30*175	A36	3	237	0.1	29.33
P432	PLT30*175	A36	1	247	0.1	10.16
P423	PLT20*408.9	A36	1	409	0.3	26.25
P422	PLT10*89.7	A36	1	230	0.0	1.62
P416	PLT20*414.8	A36	1	415	0.3	27.02
P388	PLT16*323	A36	10	428	0.2	173.63
P365	PLT10*89.7	A36	2	241	0.0	3.39
P358	PLT10*89.7	A36	8	241	0.0	13.58
P349	PLT16*291.5	A36	10	300	0.2	109.84
P340	PLT16*444.4	A36	2	444	0.3	49.62
P141	PLT30*165	A36	4	261	0.1	40.53
P120	PLT30*165	A36	2	493	0.2	38.29
P119	PLT30*165	A36	2	497	0.2	38.64
P09	PLT30*165	A36	3	534	0.2	62.20
P05	PLT30*175	A36	4	410	0.2	67.55
P48	PLT30*170	A36	4	458	0.2	73.43
P46	PLT30*175	A36	4	430	0.2	70.87
P2	PLT20*414.8	A36	22	415	0.3	594.38
M622	Ø324*12	A53	1	768	0.7	71.92
M207	Ø324*12	A53	1	765	0.7	71.61
M268	Ø273*10	A53	12	780	0.6	602.01
M106	Ø273*10	A53	1	980	0.8	63.03
M199	Ø273*10	A53	1	4574	3.9	292.00
M153	Ø273*10	A53	1	4527	3.9	290.86
M138	Ø273*10	A53	1	4507	3.9	289.58
M137	Ø273*10	A53	1	4514	3.9	290.06
M134	Ø273*10	A53	1	1560	1.3	100.33
M113	Ø273*10	A53	1	780	0.6	50.17
M109	Ø273*10	A53	1	792	0.6	51.45
M106	Ø273*10	A53	1	777	0.6	50.17
M102	Ø273*10	A53	1	774	0.6	50.17
M101	Ø273*10	A53	1	774	0.6	50.17
M100	Ø273*10	A53	1	780	0.6	50.17
M98	Ø273*10	A53	1	780	0.6	50.17
M87	Ø273*10	A53	1	773	0.6	50.17
M83	Ø273*10	A53	1	2671	2.1	169.93
M61	Ø273*10	A53	1	2881	2.3	185.30
M60	Ø273*10	A53	1	2732	2.2	175.71
M54	Ø273*10	A53	1	2435	1.9	156.61
M53	Ø273*10	A53	1	1385	1.0	89.08
M52	Ø273*10	A53	1	1986	1.6	127.73
Total			58.8		6413.66	

BOLT LIST FOR ASSEMBLY MK'D. TR-50		No. Required	
DIAMETER	GRADE	TYPE	MEMBER
16	A325M	Site	B1
16	A325M	Site	B8
16	A325M	Site	B9
16	A325M	Site	B11
20	A325M	Site	TR-14

Rev	Description	DATE	DRAWN	CHKD.
0	ISSUED FOR CONSTRUCTION	28-09-11	SCAD	SCAD


NOTES
 1. ALL MARKS TO BE PREFIXED WITH CH-CP1-
 2. ALL MATERIAL GRADES AS NOTED.
 3. ● : DENOTES PART TOP & POSITION FOR HARD PUNCH.

SUBCONTRACTOR:




RASANA
 RASANA ENGINEERING IND. CO. LTD.
 TEL: 6-5360890 FAX: 06-5360891
 P.O. Box 992, Sharjah, UAE.

Main Contractor



GHANTOOT TRANSPORT & Gen. Cont. Est. (Building Division)
 NEAR MAIN BUS TERMINAL
 MUROOR ROAD-ABU DHABI
 UNITED ARAB EMIRATES
 E-mail: gbd@ghantootgroup.ae
 Web site: www.ghantootgroup.com
 TELEPHONE: 02-6414151
 FAX: 02-6412010

PROJECT MANAGER



MORGANTI
 INTERNATIONAL DIVISION
 UNITED ARAB EMIRATES
 THE MORGANTI GROUP, INC.
 100 Mill Plain Road, Danbury, CT, USA
 Tel: (203) 743-2675 Fax: (203) 830-4477

DESIGN CONSULTANT




DAR AL-OMRAN
 Planners Architects Engineers
 Tel. 9626 5604200 Fax. 96265606606
 E-mail: daralomran@daralomran.com
 P.O.Box 182571 amman - 11118 - Jordan

DESIGN CONSULTANT



RAMAHI Engineering Consultancy
 Abu-Dhabi, U.A.E., P.Box 71852 Fax 6327225

CLIENT



EMIRATE OF ABU DHABI JUDICIARY DEPARTMENT

PROJECT TITLE

ABU DHABI COURT HOUSE COMPLEX PROJECT

STEEL CANOPY - 1 DET. OF TRUSS TR-50 Sht 1of2

DRG No.: **RAS-348-CP1-TR-50**

SCALE: 1:5 PROJECT No.: **348** Rev: 0